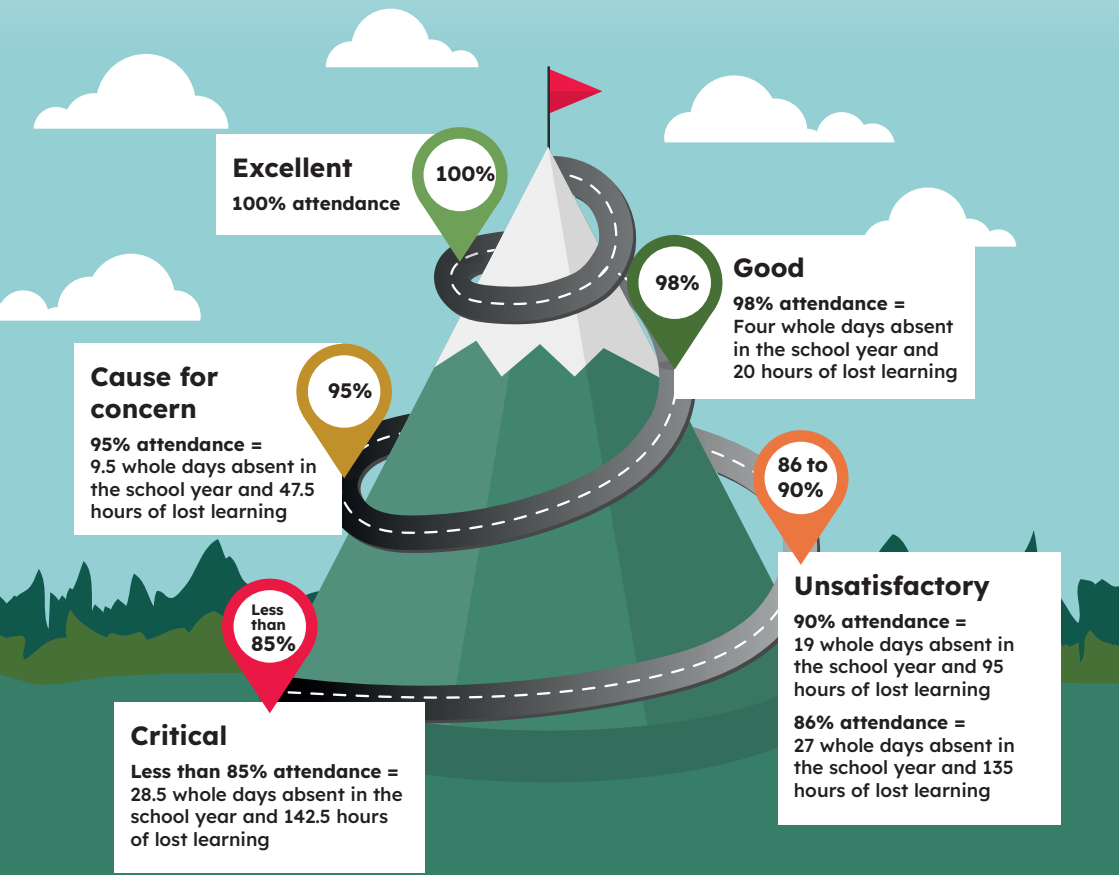


Where does your child sit on the attendance mountain?



Excellent

100% attendance

100%

Good

98% attendance =
Four whole days absent in the school year and 20 hours of lost learning

98%

Cause for concern

95% attendance =
9.5 whole days absent in the school year and 47.5 hours of lost learning

95%

86 to 90%

Unsatisfactory

90% attendance =
19 whole days absent in the school year and 95 hours of lost learning

86% attendance =
27 whole days absent in the school year and 135 hours of lost learning

Less than 85%

Critical

Less than 85% attendance =
28.5 whole days absent in the school year and 142.5 hours of lost learning